

# Santa's Cookies

designed for the dating divas  
by leah aldous designs



Who comes around on a special night?



*Santa comes around on a special night!*

So decorate some cookies like the man who says "Ho, Ho!"  
You can even add the reindeer who happily brave the snow!

*Merry Christmas from our family to yours!*

♥ love ♥

designed for the dating divas  
by leah aldous designs

ICING

Who can take  
a plain day and  
make it magical?

Must be  
*Santa!*

COCONUT FLAKES

Who's got a beard  
that's long and white?  
Must be Santa!

Must be  
*Santa!*

RED SPRINKLES

Who wears a  
red cap on his head?

Must be  
*Santa!*

RED HOT

Who's got a  
big red cherry nose?

Must be  
*Santa!*

MINI CHOCOLATE CHIPS

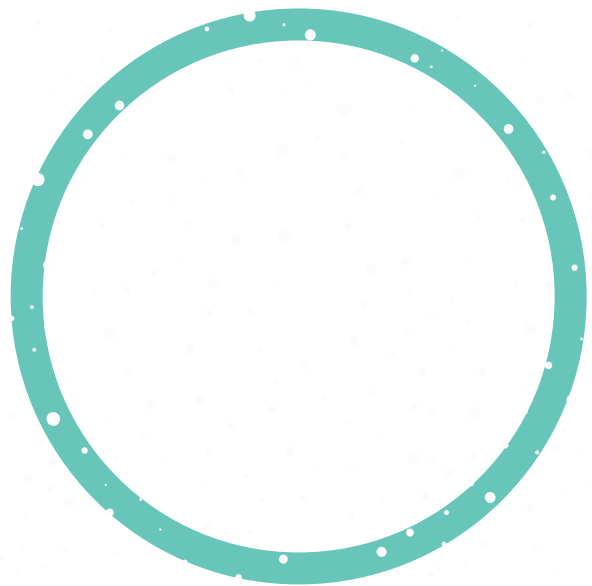
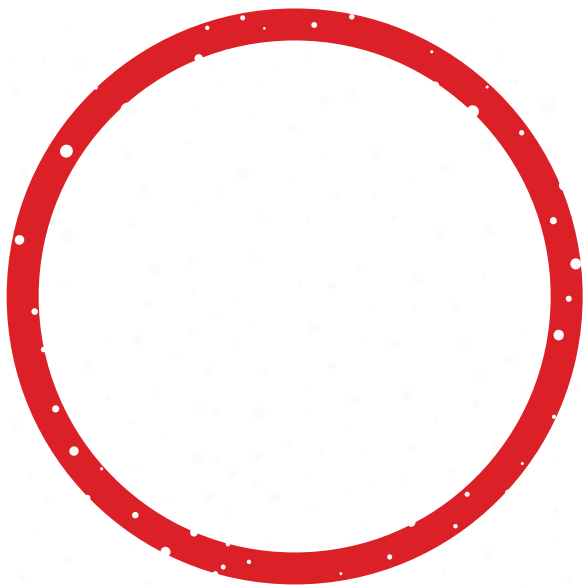
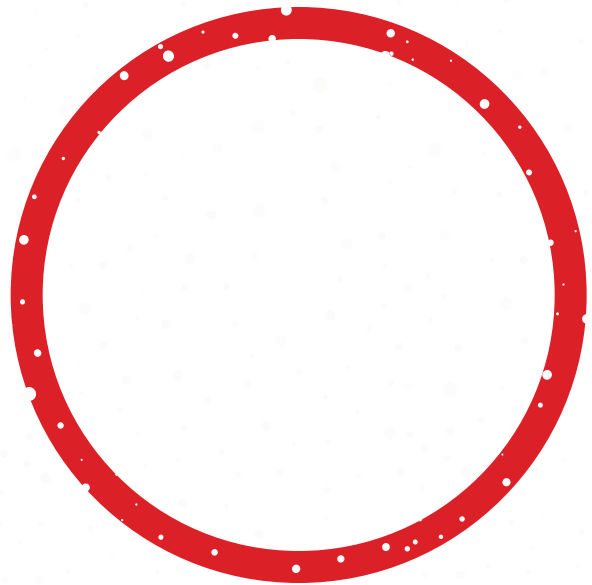
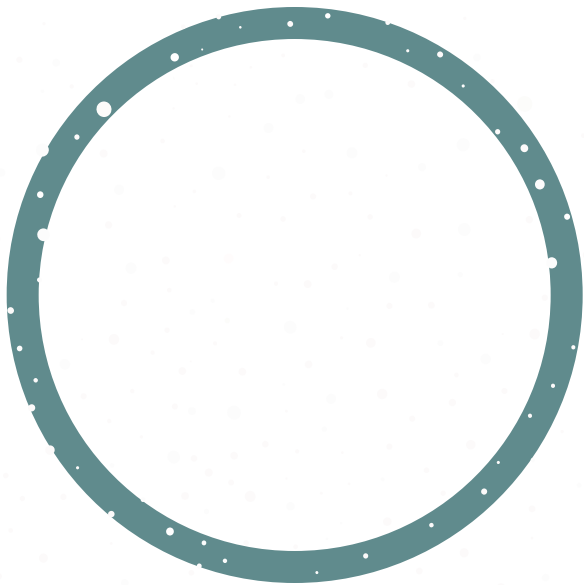
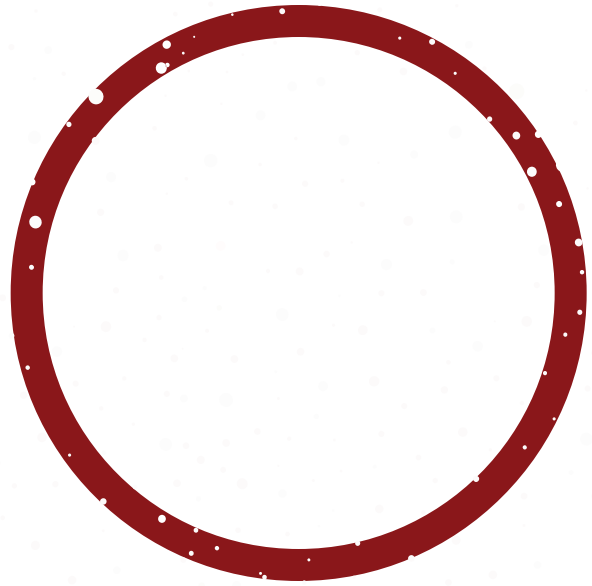
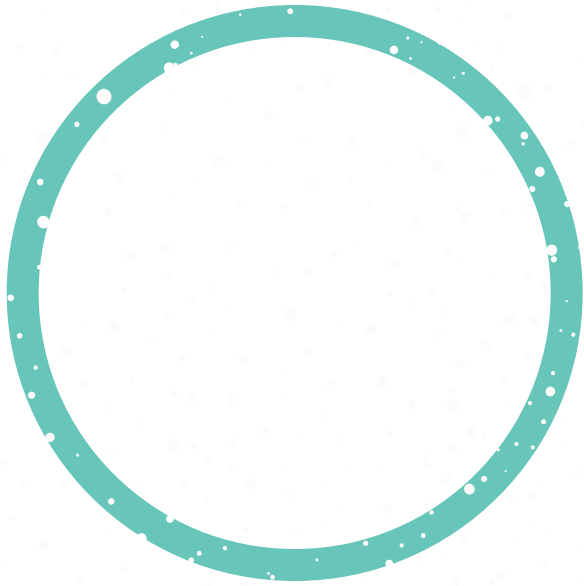
Who's got eyes that  
sparkle and shine?

Must be  
*Santa!*

PRETZELS

8

little reindeer  
pull his sleigh with  
1 whose red nose  
*lights the way!*



# Must Be Santa



Who's got a beard that's long and white?  
Santa's got a beard that's long and white.  
Who comes around on a special night?  
Santa comes around on a special night.

Special night, beard that's white.  
Must be Santa, Must be Santa,  
*Must be Santa, Santa Claus*

Who wears boots and a suit of red?  
Santa wears boots and a suit of red.  
Who wears a long cap on his head?  
Santa wears a long cap on his head.

Cap on head, suit that's red,  
special night, beard that's white.  
Must be Santa, Must be Santa,  
*Must be Santa, Santa Claus*

Who's got a big red cherry nose?  
Santa's got a big red cherry nose.  
Who laughs this way, "Ho, ho ho!"  
Santa laughs this way, "Ho, ho ho!"

Ho, ho, ho, cherry nose,  
cap on head, suit that's red,  
special night, beard that's white.  
Must be Santa, Must be Santa,  
*Must be Santa, Santa Claus*

Who very soon will come our way?  
Santa very soon will come our way!  
Eight little reindeer pull his sleigh,  
Santa's little reindeer pull his sleigh.

Reindeer sleigh, come our way,  
Ho, ho, ho, cherry nose,  
cap on head, suit that's red,  
special night, beard that's white.  
*Must be Santa, Must be Santa,*

*Must be Santa, Santa Claus!*

