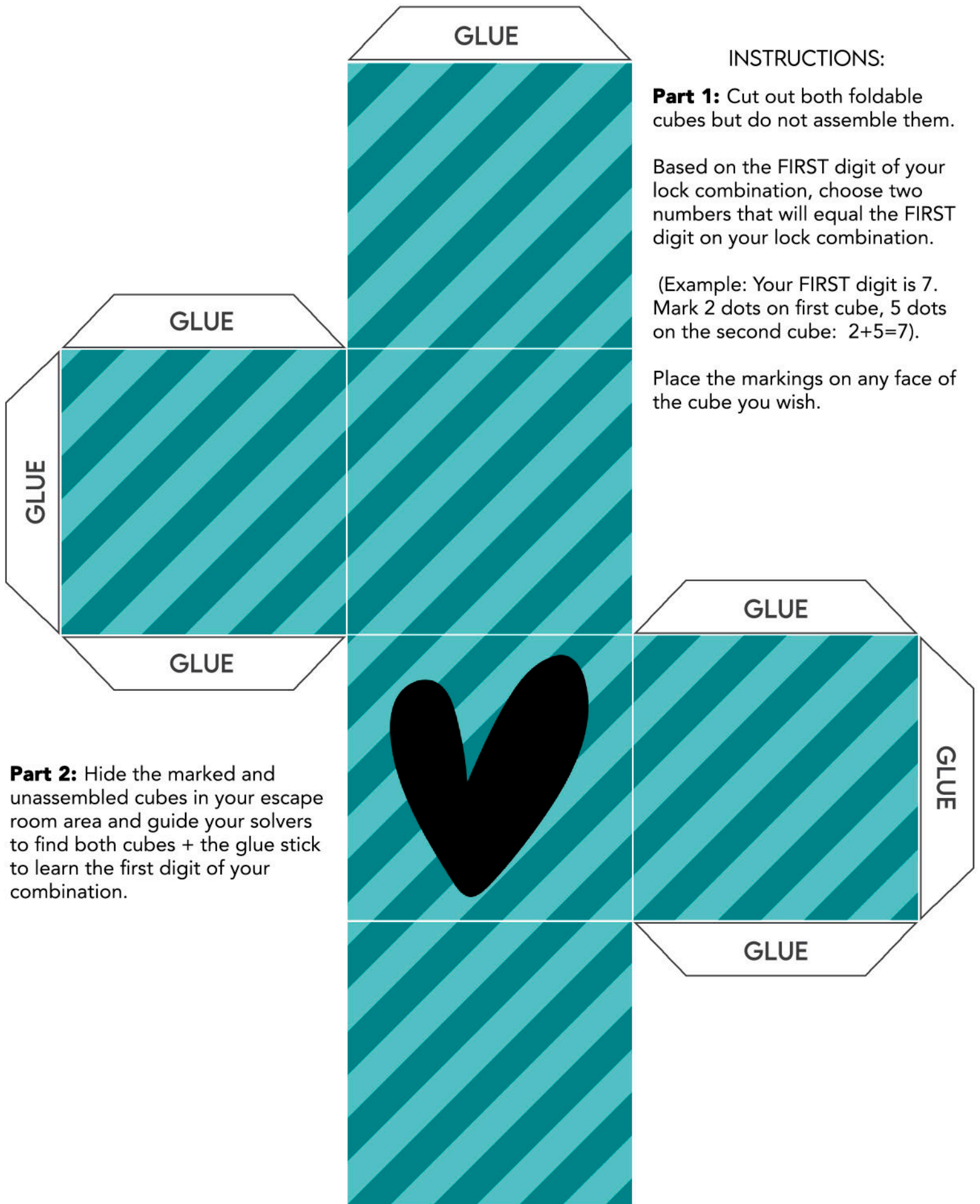


PUZZLE #1 - FOLDABLE CUBES



INSTRUCTIONS:

Part 1: Cut out both foldable cubes but do not assemble them.

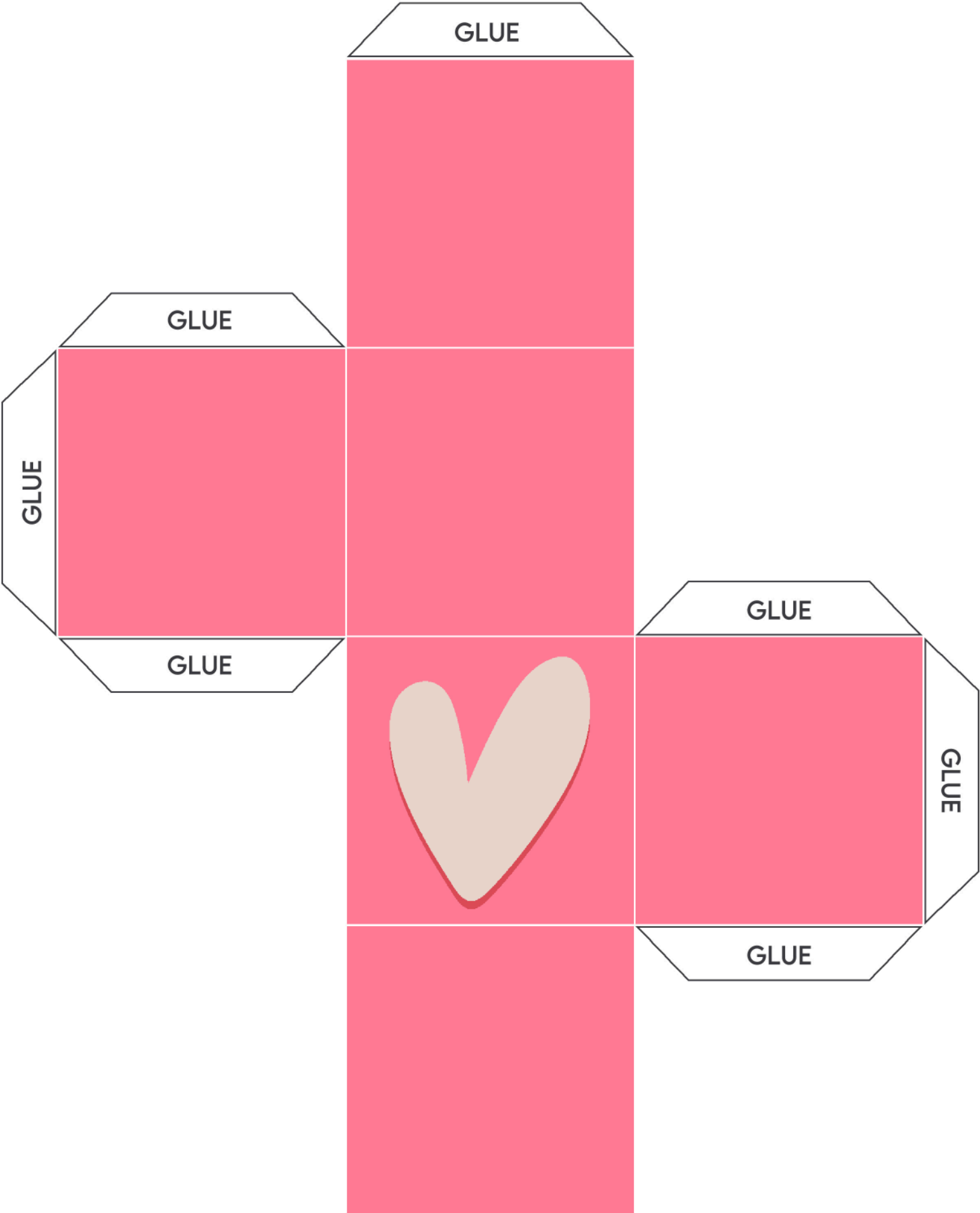
Based on the **FIRST** digit of your lock combination, choose two numbers that will equal the **FIRST** digit on your lock combination.

(Example: Your **FIRST** digit is 7. Mark 2 dots on first cube, 5 dots on the second cube: $2+5=7$).

Place the markings on any face of the cube you wish.

Part 2: Hide the marked and unassembled cubes in your escape room area and guide your solvers to find both cubes + the glue stick to learn the first digit of your combination.

PUZZLE #1 - FOLDABLE CUBES



THEN COMES *marriage*...



TO REVEAL THE SECOND DIGIT, FIND TWO RINGS HIDDEN NEARBY,
A TIMELESS SYMBOL OF LOVE AND COMMITMENT. $A+B=?$



INSTRUCTIONS:
Using two ring values that add up to your second digit, cut out only those two rings from the second set and hide them in different locations in your room.